



Cockle Bay, Darling Harbour

MUST SEE AND DO

- Dine alfresco at King Street Wharf or Cockle Bay Wharf
- Enjoy free outdoor entertainment
- Travel on the monorail
- Explore Sydney Wildlife World and Sydney Aquarium
- Tour the Powerhouse Museum, a showcase of Australian history
- Visit the Chinese Garden of Friendship

Darling Harbour is a lively waterfront precinct where there's always plenty of things to do, great shopping and over fifty places to eat and drink. Explore amazing attractions and enjoy free events all year round. All of this is within a twenty minute walk of the Sydney Opera House and Sydney Harbour Bridge. Catch a movie on the giant IMAX Theatre screen, more than eight storeys high or learn about Australia's maritime history at the Australian National Maritime Museum. Sydney Aquarium is one of the largest in the world with more than 11,500 Australian aquatic animals, or see over 6,000 Australian animals living in nine unique habitats at Sydney Wildlife World.

One of the prime hotspots, King Street Wharf, is packed with sleek dining establishments, while Cockle Bay Wharf, a waterfront promenade around Darling Harbour bustles with alfresco cafés, bars and restaurants. Across the water lies Harbourside Shopping Centre, a dynamic mix of shops, restaurants and food to go.

Darling Harbour is the perfect place to stay if you want to be in the thick of the action!

Ibis Sydney Darling Harbour

★★★



From **\$204** PER ROOM PER NIGHT

70 Murray Street, Darling Harbour

Ibis Sydney Darling Harbour is in the heart of the tourist district of Sydney surrounded by premier attractions including Sydney Aquarium, Sydney Wildlife World, IMAX Theatre and Cockle Bay Wharf. The hotel has easy access to monorail and light rail services and an under cover walkway connects the hotel to the award winning Sydney Convention and Exhibition Centre, the city's premier event location.

Make yourself at home... inviting, modern, spacious and comfortable rooms, with a cosy bed and a functional bathroom. Your room has everything you need and then more. Many rooms offer spectacular views of Darling Harbour and Sydney city.

Meal time throughout your stay means the chance to discover the culinary stops of the Ibis restaurants, open every night of the year, while the bar at Ibis Sydney Darling Harbour is a friendly place to get together at any time of day.

PROPERTY FEATURES:

- 24 hour reception
- Restaurant
- Bar
- Internet facilities (broadband)
- Parking (extra charge)

ACCOMMODATION FEATURES:

- Air-conditioning
- Tea/coffee making facilities
- In-room movies (pay to view)
- Ironing facilities
- Internet access (broadband)
- Laundry/dry cleaning service

Room serviced daily

Cockle Bay Wharf 100m
Map 1 Page 57 Ref. 35



ROOM TYPE	ADULTS	1 NT	3 NTS	5 NTS
1 Apr – 28 Dec 09, 2 Jan – 31 Mar 10				
Pyrmont View	1 to 2	204	612	1020
Harbour View	1 to 2	254	762	1270
29 – 30 Dec 09, 1 Jan 10				
Pyrmont View	1 to 2	279	837	1395
Harbour View	1 to 2	329	987	1645

Other prices and 4 night minimum stay applies when stay includes 31 Dec 09.

Children 0 to 11 years – free when sharing with an adult and using existing bedding.

Max capacity 2.

IBISYD

BONUS OFFER

- Stay 3 nights and the 4th night is FREE, valid 1 Apr – 30 Sep 09.

Ibis Sydney King Street Wharf

 **From \$195** PER ROOM PER NIGHT



ARTIST'S IMPRESSION



Corner of Shelley and Erskine Streets, Sydney

Opened in 2008, Ibis Sydney King Street Wharf is conveniently located near the restaurants, bars and nightlife of King Street Wharf and only minutes away from the city centre. An inlet of Sydney Harbour, the district offers a myriad of

entertainment, dining and transport options and draws millions of local and international visitors each year to its many attractions.

Ibis hotels are renowned throughout the world for their quality, simplicity, value for money and friendly service. Close to tourist attractions and the major restaurant precinct of Darling Harbour, the hotel is popular with groups and individual leisure travellers alike.

PROPERTY FEATURES:

- 24 hour reception ■ Restaurant ■ Bar
- Internet facilities ■ Parking (limited – extra charge) ■ Lift

ACCOMMODATION FEATURES:

- Air-conditioning ■ Tea/coffee making facilities ■ Cable TV
- In-room movies (pay to view) ■ Ironing facilities
- Internet access (wireless) ■ Hair dryer ■ Safe

Room serviced daily

Cockle Bay Wharf 350m
Map 1 Page 57 Ref. 23



ROOM TYPE	ADULTS	1 NT	3 NTS	5 NTS
1 Apr – 28 Dec 09, 2 Jan – 31 Mar 10				
Standard	1 to 2	195	585	975
Superior	1 to 2	225	675	1125

Other prices apply 29 Dec 09 – 1 Jan 10. 3 night minimum stay applies when stay includes 31 Dec 09.

Children 0 to 11 years – free when sharing with an adult and using existing bedding.

Max capacity 2 adults/1 child. **IBKSYD**

BONUS OFFER

- Stay 3 nights and the 4th night is FREE, valid 1 Apr – 30 Sep 09.

Four Points by Sheraton Darling Harbour Sydney ★★★★★

 **From \$248** PER ROOM PER NIGHT



161 Sussex Street, Sydney

Overlooking colourful Darling Harbour, nestled between Sydney's vibrant Cockle Bay and the sophisticated King Street Wharf, Four Points by Sheraton Darling Harbour Sydney occupies an enviable location for leisure travellers visiting Sydney. Just a short walk will take you to an array of restaurant venues, Sydney's premier shopping districts, Pitt Street Mall, Queen Victoria Building, Chinatown, the theatre and entertainment district with the Sydney Monorail system on the doorstep of the hotel.

PROPERTY FEATURES:

- 24 hour reception
- Gymnasium (24 hour)
- Restaurant
- Bar
- Business facilities
- Room service (24 hour)
- Parking (extra charge)
- Laundry/dry cleaning service

ACCOMMODATION FEATURES:

- Air-conditioning
- Tea/coffee making facilities
- Mini bar ■ Hair dryer
- In-room movies (pay to view)
- Ironing facilities
- Internet access (broadband)
- Safe ■ Cable TV

Room serviced daily

Cockle Bay Wharf 50m
Map 1 Page 57 Ref. 29



HARBOUR VIEW

ROOM TYPE	ADULTS	1 NT	3 NTS	5 NTS
1 Apr – 30 Sep, 13 – 29 Dec 09, 2 – 31 Jan 10*				
City Side	1 to 2	248	744	1240
Harbour View	1 to 2	275	825	1375
Deluxe Harbour View	1 to 2	301	903	1505
1 Oct – 12 Dec 09, 1 Feb – 31 Mar 10				
City Side	1 to 2	296	888	1480
Harbour View	1 to 2	349	1047	1745
Deluxe Harbour View	1 to 2	376	1128	1880
30 Dec 09 – 1 Jan 10				
City Side	1 to 2	N/A	1800	3000
Harbour View	1 to 2	N/A	2100	3500
Deluxe Harbour View	1 to 2	N/A	2199	3665

Children 0 to 12 years – free when sharing with an adult and using existing bedding. Cot free of charge.

Max capacity City Side/Harbour View – 2, Deluxe Harbour View – 3.

FPOSYD

BONUS OFFER

- * Stay 3 nights or more and receive a \$50 food and beverage voucher per room per day for use in Corn Exchange Restaurant.

Clarion Suites Southern Cross on Harbour ★★★★★



Deluxe boutique hotel located at the crossroads of Darling Harbour, Cockle Bay Wharf and Chinatown.

Cockle Bay Wharf 100m
Map 1 Page 57 Ref. 54

Corner Harbour and Goulbourn Streets, Darling Harbour

PROPERTY FEATURES:

- Pool
- Spa
- Sauna
- Guest laundry

ACCOMMODATION FEATURES:

- Air-conditioning
- Kitchen with microwave
- Internet access
- Hair dryer
- Ironing facilities
- Safe

Apartment serviced daily

From **\$155** PER ROOM PER NIGHT

ROOM TYPE	ADULTS	1 NT	3 NTS	5 NTS
1 Apr – 31 May, 1 Oct – 30 Dec 09, 1 Jan – 31 Mar 10				
Studio	1 to 2	159	477	636
1 Bedroom	1 to 2	169	507	676
2 Bedroom	1 to 4	290	870	1160
3 Bedroom	1 to 6	430	1290	1720

ROOM TYPE	ADULTS	1 NT	3 NTS	5 NTS
1 Jun – 30 Sep 09				
Studio	1 to 2	155	465	620
1 Bedroom	1 to 2	165	495	660
2 Bedroom	1 to 4	280	840	1120
3 Bedroom	1 to 6	400	1200	1600

Other prices apply 31 Dec 09.

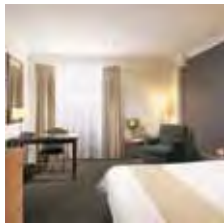
Children 0 to 12 years – free when sharing with an adult and using existing bedding. Cot free of charge.

Max capacity Studio – 2, 1 Brm – 3, 2 Brm – 5, 3 Brm – 7.
CSSSYD

BONUS OFFER

- Stay 4 nights and the 5th night is FREE.
(5 night price includes 1 free night)

Holiday Inn Darling Harbour ★★★★★



Perfectly located in the dynamic heart of downtown Sydney, close to Chinatown and Darling Harbour attractions.

Cockle Bay Wharf 100m
Map 1 Page 57 Ref. 59

68 Harbour Street, Darling Harbour

PROPERTY FEATURES:

- 24 hour reception
- Spa
- Sauna
- Room service (24 hour)
- Gymnasium
- Restaurant
- Bar
- Parking (extra charge)

ACCOMMODATION FEATURES:

- Air-conditioning
- Tea/coffee making facilities
- In-room movies (pay to view)
- Internet access (broadband)
- Mini bar
- Hair dryer
- Safe
- Ironing facilities
- Cable TV

Room serviced daily



From **\$207** PER ROOM PER NIGHT

ROOM TYPE	ADULTS	1 NT	3 NTS	5 NTS
1 Apr – 15 Sep 09				
Superior	1 to 2	207	621	1035
Deluxe/Family	1 to 2	287	861	1435

ROOM TYPE	ADULTS	1 NT	3 NTS	5 NTS
16 Sep – 29 Dec 09, 2 Jan – 31 Mar 10				
Superior	1 to 2	240	720	1200
Deluxe/Family	1 to 2	320	960	1600

Other prices apply 30 Dec 09 – 1 Jan 10.

Children 0 to 19 years – free when sharing with an adult and using existing bedding. Cot free of charge.

Max capacity Superior – 3, Deluxe – 2, Family – 3 adults or 2 adults/2 children. **HOLSYD**

BONUS OFFERS

- Stay 3 nights or more and receive light breakfast for two people daily, valid 1 Apr – 15 Aug, 16 – 29 Dec 09, 2 – 31 Jan 10.
- Children 0 to 12 years eat breakfast FREE when dining with a paying adult.

Grand Mercure Apartments Darling Harbour ★★★★★



2 BRM HARBOUR VIEW



50 Murray Street, Darling Harbour

Grand Mercure Apartments Darling Harbour is located a 10 minute walk to the city centre and has a direct monorail link to the CBD at your doorstep. Darling Harbour is the city's most exciting visitor precinct and offers a myriad of entertainment and dining options.

The modern and stylish apartments offer views of Pyrmont or Darling Harbour, kitchen facilities, dining and lounge area, laundry facilities and balconies, perfect for couples and families.

Leisure facilities include a gym, spa, sauna and a 25 metre lap pool with amazing views of Darling Harbour.

PROPERTY FEATURES:

- 24 hour reception
- Pool (indoor)
- Sauna
- Spa
- Gymnasium
- Internet facilities
- Parking (extra charge)
- Laundry/dry cleaning service

ACCOMMODATION FEATURES:

- Air-conditioning
- Balcony
- Ironing facilities
- Laundry
- Kitchen with microwave and dishwasher
- Internet access (broadband)

Apartment serviced daily

Cockle Bay Wharf 100m
Map 1 Page 57 Ref. 31



From **\$265** PER ROOM PER NIGHT

ROOM TYPE	ADULTS	1 NT	3 NTS	5 NTS
1 Apr – 30 Sep 09				
SUNDAY TO FRIDAY				
1 Bedroom Pyrmont View	1 to 2	265	795	1325
2 Bedroom Pyrmont View	1 to 4	358	1074	1790
2 Bedroom Harbour View	1 to 4	558	1674	2790

ROOM TYPE	ADULTS	1 NT	3 NTS	5 NTS
SATURDAY				
1 Bedroom Pyrmont View	1 to 2	365	1095	1825
2 Bedroom Pyrmont View	1 to 4	458	1374	2290
2 Bedroom Harbour View	1 to 4	658	1974	3290

ROOM TYPE	ADULTS	1 NT	3 NTS	5 NTS
1 Oct – 28 Dec 09, 2 Jan – 31 Mar 10				
SUNDAY TO FRIDAY				
1 Bedroom Pyrmont View	1 to 2	275	825	1375
2 Bedroom Pyrmont View	1 to 4	369	1107	1845
2 Bedroom Harbour View	1 to 4	569	1707	2845

ROOM TYPE	ADULTS	1 NT	3 NTS	5 NTS
SATURDAY				
1 Bedroom Pyrmont View	1 to 2	375	1125	1875
2 Bedroom Pyrmont View	1 to 4	469	1407	2345
2 Bedroom Harbour View	1 to 4	669	2007	3345

Other prices apply 29 Dec 09 – 1 Jan 10. 7 night minimum stay applies when stay includes 31 Dec 09.

Children 0 to 11 years – free when sharing with 2 adults and using existing bedding.

Max capacity 1 Bedroom Pyrmont View – 2, 2 Bedroom Pyrmont View/2 Bedroom Harbour View – 5. **GRASYD**

BONUS OFFER

- Stay 6 nights and the 7th night is FREE or stay 8 nights and the 9th and 10th nights are FREE.

DARLING HARBOUR

Novotel Sydney on Darling Harbour ★★★★★



100 Murray Street, Darling Harbour

Novotel Sydney on Darling Harbour offers you hotel accommodation in the heart of the Darling Harbour precinct in Sydney with all the Darling Harbour attractions at your doorstep. Explore the Sydney Aquarium, IMAX Theatre, Powerhouse Museum, Australian National Maritime Museum, Harbourside Shopping Centre, Sydney Wildlife World and much more. Cockle Bay Wharf and King Street Wharf are two of Sydney's most exciting dining and entertainment destinations.

At the end of the day relax in the comfort of your Darling Harbour hotel accommodation. Spacious rooms are of high quality and boast great views. Enjoy views across the ever growing and popular Pyrmont area, to the spectacular Anzac bridge, and west towards the Blue Mountains, or choose a Harbour View room to really take advantage of the location and enjoy remarkable views of Darling Harbour and the panoramic Sydney skyline.

The premier dining venue at Novotel Sydney on Darling Harbour, Dish, A Restaurant offers superb international cuisine in relaxed, informal surroundings overlooking the spectacular view of Sydney's city skyline. The culinary team work tirelessly to deliver fresh exciting menus to satisfy even the most demanding tastes. Liquid, A Bar offers guests a modern relaxed bar with lounge areas and outdoor terrace overlooking the city skyline and Darling Harbour.

PROPERTY FEATURES:

- 24 hour reception
- Restaurant
- Bar
- Pool (outdoor)
- Tennis court
- Business centre
- Parking (extra charge)

ACCOMMODATION FEATURES:

- Air-conditioning
- In-room movies (pay to view)
- Mini bar
- Tea/coffee making facilities
- Hair dryer
- Cable TV
- Internet access (broadband)
- Ironing facilities
- Safe

Room serviced daily

Cockle Bay Wharf 100m
Map 1 Page 57 Ref. 39

From **\$269** PER ROOM PER NIGHT



ROOM TYPE	ADULTS	1 NT	3 NTS	5 NTS
1 Apr – 30 Sep, 1 – 28 Dec 09, 2 – 31 Jan 10				
Standard Pyrmont View	1 to 2	269	807	1345
Superior Harbour View	1 to 2	329	987	1645
1 Oct – 30 Nov 09, 1 Feb – 31 Mar 10				
Standard Pyrmont View	1 to 2	289	867	1445
Superior Harbour View	1 to 2	349	1047	1745
29 – 30 Dec 09, 1 Jan 10				
Standard Pyrmont View	1 to 2	429	1287	2145
Superior Harbour View	1 to 2	489	1467	2445

Other prices and 4 night minimum stay applies when stay includes 31 Dec 09.

Children 0 to 15 years – free when sharing with 2 adults and using existing bedding.

Max capacity 3 adults or 2 adults/2 children. **NOVSYD**

BONUS OFFERS

- Stay 3 nights and the 4th night is FREE, valid 1 Apr – 30 Sep 09.
- Up to two children 0 to 15 years eat breakfast FREE when dining with paying adults.

Novotel Rockford Darling Harbour ★★★★★



Located within Darling Harbour precinct, and walking distance to the city, Entertainment Centre and the Convention and Exhibition Centre.

Cockle Bay Wharf 250m
Map 1 Page 57 Ref. 58

Little Pier Street, Darling Harbour

PROPERTY FEATURES:

- 24 hour reception
- Restaurants (2) ■ Bar
- Business facilities
- Gymnasium
- Pool (indoor)
- Internet facilities (broadband)
- Laundry/dry cleaning service
- Parking (extra charge)

ACCOMMODATION FEATURES:

- Air-conditioning
- Tea/coffee making facilities
- In-room movies (pay to view)
- Cable TV ■ Hair dryer ■ Safe

Room serviced daily

From **\$229** PER ROOM PER NIGHT

ROOM TYPE	ADULTS	1 NT	3 NTS	5 NTS
1 Apr – 31 Aug 09, 3 – 31 Jan 10				
Superior	1 to 2	229	687	1145
Club Room	1 to 2	269	807	1345
1 Sep – 29 Dec 09, 1 Feb – 31 Mar 10				
Superior	1 to 2	269	807	1345
Club Room	1 to 2	309	927	1545
30 Dec 09 – 2 Jan 10				
Superior	1 to 2	N/A	1587	2645
Club Room	1 to 2	N/A	1707	2845

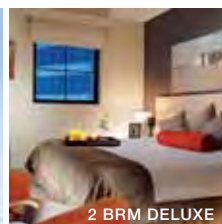
Children 0 to 15 years – free when sharing with 2 adults and using existing bedding.

Max capacity 3. **NRDSYD**

BONUS OFFERS

- Receive a complimentary upgrade to a Club Room (subject to availability), valid 1 Apr – 30 Jun, 1 Dec 09 – 31 Jan 10.
- Up to two children 0 to 15 years eat breakfast FREE when dining with paying adults.

Somerset Darling Harbour ★★★★★



Within walking distance of the bustling city, close to shopping and eateries with the exciting Darling Harbour at your doorstep.

Cockle Bay Wharf 300m
Map 1 Page 57 Ref. 36

252 Sussex Street, Sydney

PROPERTY FEATURES:

- 24 hour reception ■ Spa
- Restaurant ■ Bar ■ Gymnasium
- Sauna ■ Pool (heated indoor)
- Laundry/dry cleaning service
- Parking (extra charge)

ACCOMMODATION FEATURES:

- Air-conditioning ■ CD/DVD player
- Kitchen with microwave and dishwasher
- Internet access (broadband)
- In-room movies (pay to view)
- Safe ■ Washer/dryer
- Hair dryer ■ Ironing facilities

Apartment serviced daily (except Sundays and public holidays)

From **\$237** PER ROOM PER NIGHT

ROOM TYPE	ADULTS	1 NT	3 NTS	5 NTS
1 Apr – 31 Aug, 15 – 29 Dec 09, 3 – 30 Jan 10				
1 Bedroom Deluxe	1 to 2	237	711	1185
1 Bedroom Executive	1 to 2	277	831	1385
1 Bedroom Premier	1 to 2	304	912	1520
2 Bedroom Deluxe	1 to 4	437	1311	2185
1 Sep – 14 Dec 09, 31 Jan – 31 Mar 10				
1 Bedroom Deluxe	1 to 2	251	753	1255
1 Bedroom Executive	1 to 2	291	873	1455
1 Bedroom Premier	1 to 2	317	951	1585
2 Bedroom Deluxe	1 to 4	451	1353	2255

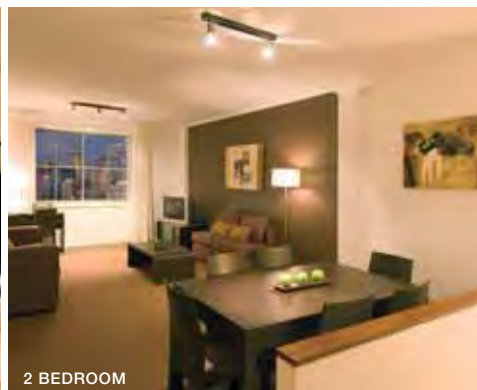
Other prices apply 30 Dec 09 – 2 Jan 10.

Children 0 to 12 years – free when sharing with an adult and using existing bedding. Cot free of charge.

Max capacity 1 Bedroom Deluxe – 2, 1 Bedroom Executive/ 1 Bedroom Premier – 3, 2 Bedroom Deluxe – 5.

SOMSYD

Oaks Goldsbrough Apartments ★★★★★



2 BEDROOM

From **\$173** PER ROOM PER NIGHT

243 Pyrmont Street, Darling Harbour

Situated in the Heritage Listed 1883 Goldsbrough building overlooking Darling Harbour, the Oaks Goldsbrough Apartments feature Studio, one and two bedroom apartments. Located within close proximity to the Sydney Convention and Exhibition Centre and surrounded by restaurants and shopping, the property is a short stroll to the monorail for access to the CBD. In addition to the magnificent 25 metre heated swimming pool, other facilities include a spa, sauna and gymnasium.

PROPERTY FEATURES:

- Pool (heated indoor) ■ Spa
- Sauna ■ Gymnasium ■ Café
- Grocery store ■ Laundry/dry cleaning service
- Parking (extra charge)

ACCOMMODATION FEATURES:

- Air-conditioning ■ Tea/coffee making facilities
- Laundry ■ Kitchen with microwave and dishwasher
- Internet access

Room serviced daily

Cockle Bay Wharf 1.5km

Map 1 Page 57 Ref. 46

ROOM TYPE	ADULTS	2 NTS	5 NTS	7 NTS
1 Apr – 25 Dec 09, 12 Jan – 31 Mar 10				
Studio	1 to 2	366	915	1211
1 Bedroom	1 to 2	410	1025	1365
2 Bedroom	1 to 4	654	1635	2212
26 Dec 09 – 11 Jan 10				
Studio	1 to 2	N/A	1215	1624
1 Bedroom	1 to 2	N/A	1355	1827
2 Bedroom	1 to 4	N/A	2140	2933

Other prices apply 11 – 14 Apr 09 and for Mardi Gras.

Children 0 to 12 years – free when sharing with an adult and using existing bedding.

Max capacity Studio – 2, 1 Bedroom – 4, 2 Bedroom – 6.

OGASYD

Crowne Plaza Darling Harbour ★★★★★☆



Located on the city side of Darling Harbour, the hotel is close to all of Sydney's major attractions and the heart of Sydney's CBD.

Cockle Bay Wharf 100m
Map 1 Page 57 Ref. 40

150 Day Street, Sydney

PROPERTY FEATURES:

- Bar
- Room service (24 hour)
- Business facilities
- Laundry/dry cleaning service
- Parking (extra charge)

ACCOMMODATION FEATURES:

- Air-conditioning
- Tea/coffee making facilities
- Morning newspaper ■ Cable TV
- In-room movies (pay to view)
- Internet access (broadband)
- Hair dryer ■ Safe
- Bathrobes

Room serviced daily



From **\$233** PER ROOM PER NIGHT

ROOM TYPE	ADULTS	1 NT	3 NTS	5 NTS
1 Apr – 30 Sep 09				
Cityscape Room	1 to 2	233	699	1165
Darling Harbour View	1 to 2	280	840	1400
1 Oct – 29 Dec 09, 2 Jan – 31 Mar 10				
Cityscape Room	1 to 2	286	858	1430
Darling Harbour View	1 to 2	333	999	1665

Other prices apply 30 Dec 09 – 1 Jan 10.

Children 0 to 19 years – free when sharing with an adult and using existing bedding. Cot free of charge.

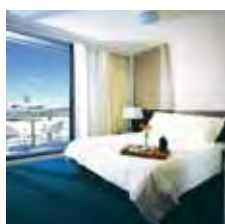
Max capacity 3 adults or 2 adults/2 children.

CPDSYD

BONUS OFFERS

- Stay 3 nights and the 4th night is FREE, valid 1 Apr – 30 Sep, 15 Dec 09 – 31 Jan 10.
 - Stay 3 nights or more and receive full breakfast for two people daily, valid 1 Apr – 30 Sep, 15 Dec 09 – 31 Jan 10.
- Offers are not combinable.

Medina Grand Harbourside ★★★★★☆



Located at King Street Wharf, an easy walk to Sydney's major tourist attractions, entertainment venues and the best shopping on offer.

Cockle Bay Wharf 200m
Map 1 Page 57 Ref. 25

55 Shelley Street, Sydney

PROPERTY FEATURES:

- 24 hour reception
- Pool
- Bar
- Restaurant
- Gymnasium
- Parking (extra charge)

ACCOMMODATION FEATURES:

- Air-conditioning
- Tea/coffee making facilities
- Hair dryer
- Ironing facilities
- Internet access (broadband)
- Safe

Room serviced daily



From **\$270** PER ROOM PER NIGHT

ROOM TYPE	ADULTS	1 NT	3 NTS	5 NTS
1 Apr – 30 Dec 09, 1 Jan – 31 Mar 10				
Studio	1 to 2	270	810	1350
Studio Premier	1 to 2	286	858	1430
1 Bedroom*	1 to 2	300	900	1200
1 Bedroom Premier*	1 to 2	336	1008	1344
2 Bedroom	1 to 4	570	1710	2850
2 Bedroom Premier	1 to 4	621	1863	3105

Other prices and 3 night minimum stay applies when stay includes 31 Dec 09.

Children 0 to 12 years – free when sharing with an adult and using existing bedding.

Max capacity Studio/Studio Premier – 2, 1 Brm/1 Brm Premier – 3, 2 Brm/2 Brm Premier – 5.

MGSYD

BONUS OFFER

- * Stay 4 nights and the 5th night is FREE. (5 night price includes 1 free night)